



The Eyes of Science

... *i*magine microscopy in perfect comfort



ECLIPSE
50*i* / 55*i*



Imagine the ultimate in comfortable microscopy operation; so comfortable, that you would not even be aware you were carrying out essential observations!

After carefully listening to customer needs, Nikon designed the new 50i/55i series of compact, versatile microscopes that are ideal for clinical/laboratory inspection and basic research study.

The ultimate in usability and comfort, the 50i/55i series incorporates a host of stunning features that take the stress out of microscopy. A stay-in-position stage handle and tilting/telescoping ergonomic eyepiece tube ensure ideal viewing posture, enabling long hours of observations to be carried out in perfect comfort.

The 50i/55i series is built around Nikon's tried and tested infinity optics, the CFI60 system, which means you not only get the optimum optical performance, but you also have the freedom to add various accessories to create the setup that best suits your purpose.

50i/55i

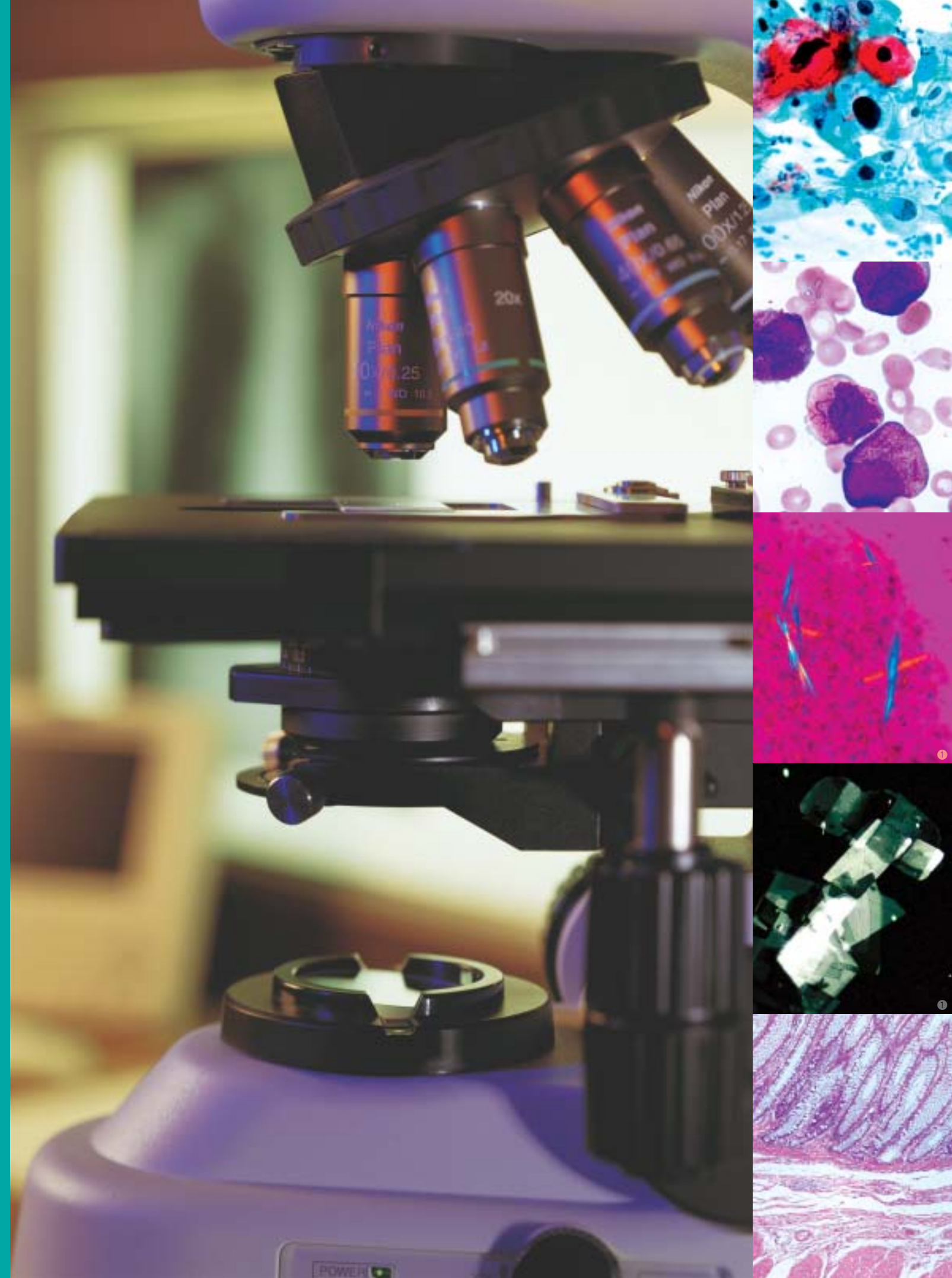
... the ultimate comfort that takes clinical microscopy to new heights.

— Cool illumination (55i)—LED illumination generates no heat and maintains the color temperature even when the brightness is changed. Also, because this model can run on batteries, it can be used anywhere. (See page 4)

— Novel ergo stage—the stage handle always remains in the same position during stage movement, enabling easy operation with your hand resting on the desk. (See page 4)

— A digital camera can be mounted on the ergonomic eyepiece tube by using a DSC port, enabling easy digital documentation in a comfortable operating posture. (See page 6)

— The "Ergo-View," a retrofittable compact cytodiagnosis unit, enables quick magnification changeover using a hand switch. (See page 7)



... in harmony with you

Cool illumination (55i)

Utilizing white LED illumination, the 55i is an ideal choice for brightfield applications. As the color temperature does not change even when the brightness is altered, adjusting the color balance filter or voltage is no longer necessary. And because the LED illuminator is built into the base, comprehensive Koehler illumination using a diaphragm is possible. The illuminator does not generate heat. Due to its minimal power consumption, the 55i has an extremely long lamp lifecycle, and its battery drive means it can be used anywhere.



New ergonomic tube

The new ergonomic tube can be inclined from 10° to 30° and the eyepieces can be extended 40mm. This ensures optimum eye point and a comfortable viewing posture, regardless of the operator's physique or if intermediate modules are being used. An optional DSC port for attaching a digital camera enables users to create a digital documentation system in comfort. An optional eye-level riser* can raise the eye point in 25mm increments.

*The number of risers that can be used at any one time depends on the intermediate modules being used.



Viewing angle is adjustable 10°–30°.



Eyepiece length is extendable up to 40mm.

Refined stage

Stay-in-position stage handle

The stage handle stays at the same position without interfering with the stage movement. Because the stage handle and the focusing knob are always situated close to each other, users can easily and smoothly operate the controls with their hand resting on the desk. The height and torque of the stage handle are adjustable to further enhance comfort during operation.



Stage with higher durability and smoother surface

"Alumite," a new hardening treatment, has been applied to the stage surface to increase durability and smoothness. This facilitates the smooth exchange of specimens while preventing the surface from being scratched by the repeated exchange of slide glasses.

Refocusing stage

The stage can be lowered by pushing the lever down, and will return to its former height when the lever is pressed again. This feature eliminates the need to refocus the image manually each time the specimen is changed and the slide oiled, greatly improving microscopy productivity.



Easy-access controls

Frequently used controls and switches for adjusting the field diaphragm and illumination intensity have been concentrated in the lower part of the righthand side to minimize the operator's hand movements and enable operation without having to take your eyes off the specimen.



Rock-solid stability

Utilizing computer-aided engineering (CAE), Nikon has successfully increased the solidity of the microscope body and produced a sleek, modern design. Although compact in size, the new microscopes boast superb durability and stability, even during applications in which they are upgraded with various attachments.



ECLIPSE 55i

— With white LED illumination as its light source, this model is perfect for brightfield applications.

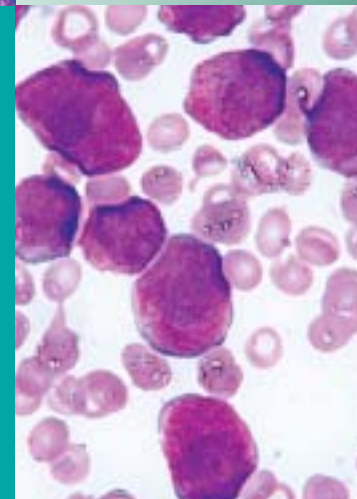
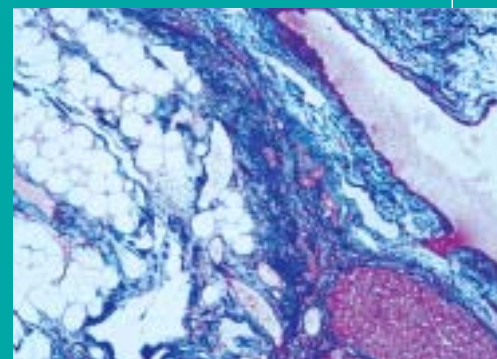
— No color temperature deviation even when brightness is changed.

— Cool LED prevents focus deviations caused by heat-deformed equipment.

— When Ergo-View cytodiagnosis unit is installed, it maintains uniform brightness even if magnifications are changed.

— Long lifecycle illumination consumes very little power.

— Battery-drive capability using optional lithium batteries means model can be used anywhere.



ECLIPSE 50i

— Bright 6V-30W halogen lamp as light source.

— ND8 filter is built-in as standard.

— Enables brightfield, darkfield, epi-fluorescence, phase contrast and simple polarizing observations.

... in harmony with your vision



CF160—tried and tested infinity optics

Highly acclaimed optics combine the CF design with infinity optics and utilize a 60mm parfocal distance, resulting in longer working distances and high N.A.'s, while producing crisp, clear images with minimal flare. The CF160 optics are perfect for both observations and capturing images with a digital camera, and they provide a flexible upgrade path to accommodate various accessories to meet individual applications.



DSC port enables digital imaging in comfort

A new optional DSC port can be combined with an ergonomic tilting/telescoping tube to balance user needs for both digital-image capture and comfortable viewing. Including a 0.7X lens that is designed to optimize the image to the 2/3-inch CCD, the same area as that viewed through the eyepieces can be captured with a C-mount digital camera. A centering and focus adjustment mechanism is also provided.

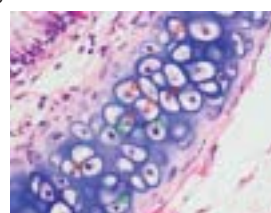
DS-5M-L1 "Digital Sight" standalone digital camera

The standalone design of the DS-5M-L1 allows 5-million-pixel, high-definition images to be captured without connecting to a personal computer. The camera-control unit features a built-in 6.3-inch LCD monitor with excellent resolution, enabling focusing to be carried out on the screen. Optimal camera settings have been preprogrammed for each observation method and are selectable from a menu. Users can take advantage of the camera's network functions to send or share images over a network and manage images on a server, saving time and increasing productivity.

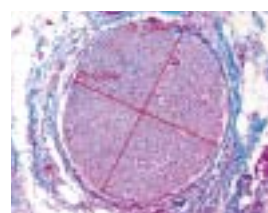
Wide variety of tools



Scene menu



Count marking



Distance measurement between 2 points



Ergo-View enables quick magnification switching and marking

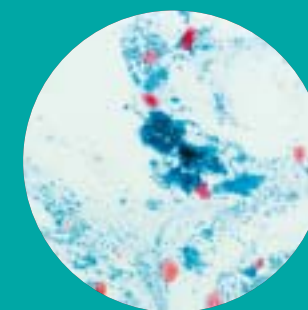
The compact Ergo-View cytodagnosis unit has been developed for easier and more comfortable cytology examinations. Retrofittable to the 50i/55i, it can quickly move between 10X and 40X at the flip of a switch, utilizing a motorized mechanism.

- Compact, sleek design.
- Easily attachable to 50i/55i.
- Fast and accurate motorized magnification changeover with hand switch.
- Unique quiet, vibration-free mechanism for magnification change ensures superb parfocality of images and no deviation in focusing.
- Easy marking while observing the specimen through eyepieces.
- Quick exchange of slides with one hand is possible by using an optional specimen holder for one slide.

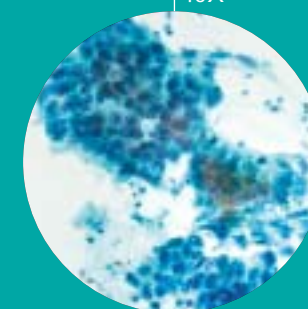
Constant brightness when combined with the 55i

When the Ergo-View is mounted on the 55i, which utilizes white LED illumination, light intensity is automatically adjusted in conjunction with changes in magnification. Constant brightness is provided throughout the inspection, preventing eyestrain.

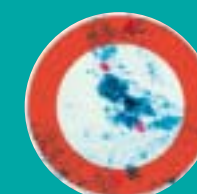
... in harmony with your hands



10X



40X



Change between 10X and 40X at the flip of a switch.



Marking is easily performed while observing the image.

Quick-dry ink facilitates fast, clean marking.



... in harmony with your needs

... applying various methodologies

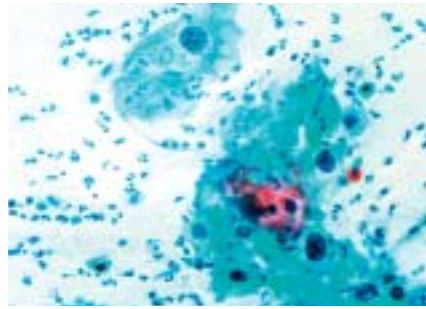
Pathology tests

As the 55i model uses white LED illumination, it can maintain the same color temperature even if the brightness is changed. Observations extending to many hours can be carried out in a natural posture, without physical strain because an ergonomic tube enables the flexible adjustment of the eye point.



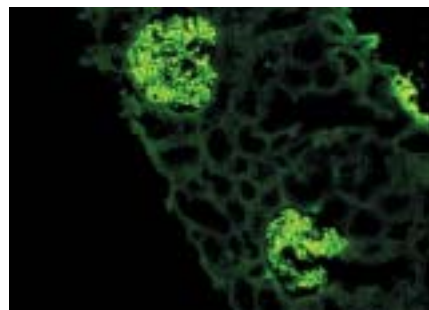
Cytodiagnosis tests

The new Ergo-View cytodagnosis unit makes magnification switching and marking faster and easier. When it is combined with the 55i model, changes in the amount of LED light are aligned with magnification changes, enabling observation at a constant brightness.



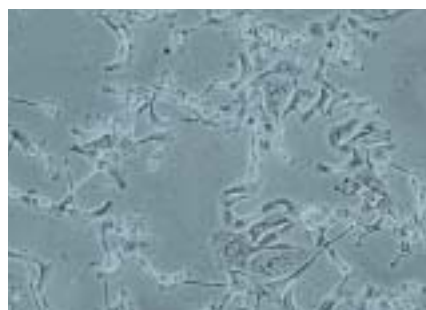
Epi-fluorescence microscopy

A new dedicated turret-type epi-fluorescence illuminator has a quick-change mechanism combined with a unique filter-lock system and front-mounted shutter, providing the ultimate in clinical fluorescence diagnostic microscopy.



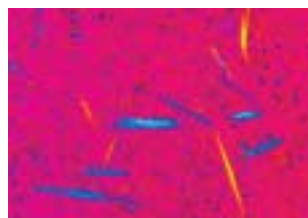
Phase contrast microscopy (50i)

Developed expressly for this technique, our unique Apodized Phase Contrast objectives enable the detection of minute structures—previously difficult to detect due to annoying halos—with excellent contrast and a much wider tonal range. This is ideal for urinary sediment tests.



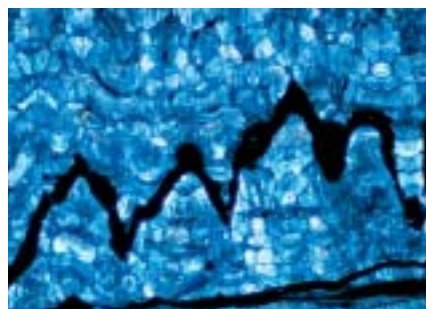
Simple polarizing/sensitive color-polarizing microscopy (50i)

Simple polarizing microscopy can be performed easily using dedicated accessories. Sensitive color-polarizing microscopy enables uric acid crystals forming inside an organism to be identified by changing the interference color via a lever. Such microscopy is ideal for gout tests.



Darkfield (50i)

Darkfield microscopy is ideal for observing specimens such as blood and the minute structures of flagella. A dry- or oil-type darkfield condenser can be selected.



... and a wide range of accessories

New accessories complement a rich variety of existing accessories.

Epi-fluorescence attachment

This dedicated turret-type epi-illuminator can accommodate four filter cubes despite its compact size. Filters or mirrors in the filter cubes can be easily replaced to create the desired combination. The attachment's glowing display tags make it easy to recognize filter names in a darkened room.



Eye-level riser

The eye-level riser can raise the eye-point height by 25mm at one time (up to 100mm* maximum).

*: The number of risers that can be used at any one time depends on the tube or intermediate modules being used.



Teaching head (50i)

These teaching heads, which come with a built-in pointer, facilitate simultaneous viewing of the same specimen by up to 5 persons without compromising image brightness.



2-person (side-by-side) version

Ergo-View cytodagnosis unit

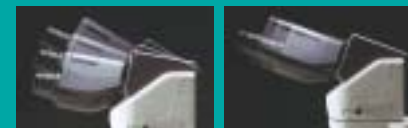
The Ergo-View, a compact cytodagnosis unit, can be easily retrofitted to the microscope. Utilizing a motorized control, it enables easy switching between 10X and 40X magnifications at the flip of a switch. Marking operation is also easy, even while viewing the specimen.



Eyepiece tubes

In addition to the ergonomic tube, which features a viewing angle of 10°–30° and eyepieces that can be extended up to 40mm, the following Eclipse series tubes are also available.

Ergonomic tube



Binocular tube

Trinocular tube F

Trinocular tube T



DSC port

The optional DSC port allows a C-mount digital camera to be mounted to the ergonomic tube.



Double port

Mounted between the main body and eyepiece tube, the double port enables operators to use two CCTV camera systems simultaneously or one CCTV camera and one digital camera.



Magnification module

The magnification module allows the intermediate magnification to be changed to 1X, 1.25X, 1.5X or 2X, enabling the operator to frame the image to be captured with a digital camera to match the view field seen through the eyepieces.



Drawing tube

The observation image and drawing can be seen together through the eyepieces. When necessary, 100% of the light can be sent to the observation port.



DS-5M-L1 Digital Sight digital camera system

5-megapixel, high-definition images can be easily captured without connection to a PC or external monitor. The camera controller includes a built-in, 6.3-inch LCD monitor with extremely high resolution, enabling the operator to focus the image on the monitor. The "Scene Function" allows the optimum camera setting for each observation method to be selected from the menu.



FX-III series photomicrographic equipment

The FX series features a direct-projection system with swing-out prism to ensure fast exposures and accurate metering.

U-III: 0.1% and 1% spot exposure and 35% integrated-average measurement modes

H-III: 1% spot and 35% integrated-average measurement modes

P-III: Manual exposure model

Lithium-ion battery (55i)

The optional lithium-ion battery increases the mobility of the 55i by freeing it of dependence on an electrical outlet.

Simple polarizing set and sensitive color polarizing unit (50i)

These easily installed options enable operators to carry out simple polarizing/sensitive color polarizing observations.



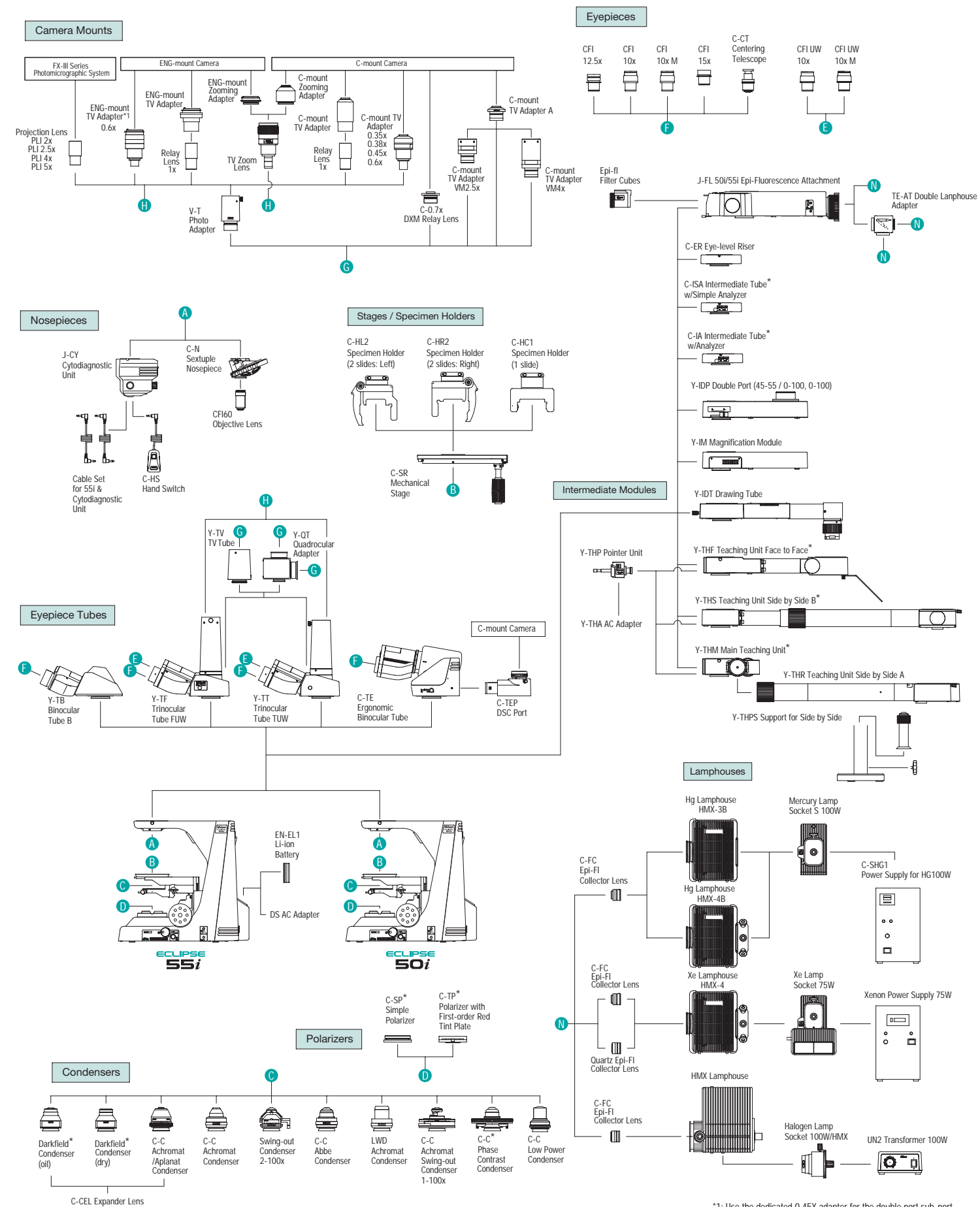
Simple polarizing set



Sensitive color polarizing unit

System Diagram

*: 50i model.



*1: Use the dedicated 0.45X adapter for the double port sub-port.



Advanced research microscope

ECLIPSE
80i

Nikon offers various options to best suit your digital-imaging needs

Digital microscope
COOLSCOPE



An all-in-one microscope
that can be operated by mouse

The COOLSCOPE is revolutionary in every respect, from its looks to its functionality and ease of use. After loading the slide glass preparation onto the tray, users need only click the mouse to operate the microscope. Observations, image recording and networking can all be done with a single unit of the COOLSCOPE—no need for a PC. The popular image of a microscope has undergone a major metamorphosis.

— Motorized operation enables brightfield observations through the monitor's GUI.

— Simultaneous display of both enlargements (micro) of specimen portions and whole image (macro) on a single screen.

— The point of interest can be easily moved to the center by simply clicking the point in the micro image. In the macro image, the selected point is enlarged and displayed in the micro image.

— Instant recall of previous observations can be achieved by clicking the numbered button.

— Remote operation* and viewing of images is possible through networked computers anywhere. * Some operations are limited

Please visit our dedicated website, where you will find extensive information on the uses and operation of the COOLSCOPE. www.coolscope.com

Built around an optimum digital-imaging platform, the 80i can visualize weakly fluorescing molecules with much higher brightness and contrast, while reducing background noise.

The new Plan Apo VC objectives and unique “fly-eye” optics guarantee uniform brightness over the whole view field and unparalleled resolution to the peripheries of the image. These remarkable achievements, which take digital imaging to new heights, are the result of Nikon's breakthroughs in optical technologies and precision engineering.

— Hi S/N Fluorescence System. The universal epi-fluorescence illuminator and digital-imaging head incorporate Nikon's unique Hi S/N Fluorescence System, which employs a “Noise Terminator” to achieve unparalleled contrast with excellent S/N ratios. An optional “Excitation Balancer” allows specific wavelengths to be emphasized in multi-stained specimens.

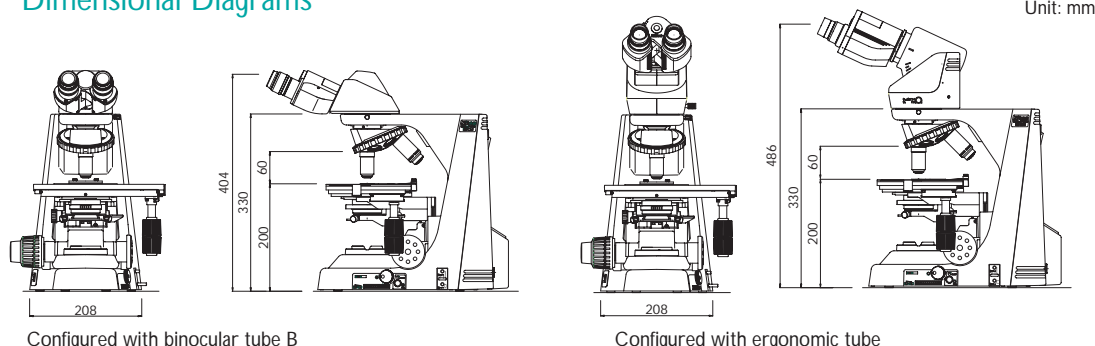
— Digital-Imaging Head. This creates an optimum digital-imaging system that enables fluorescence imaging with outstanding results. When the DS-5M-L1 digital camera is mounted to this head, observation data such as magnification and fluorescence filters in use is automatically detected and can be saved together with the image file.

— New DIC System. A perfect balance of high resolution and high contrast is possible, even at low magnifications. Three types of DIC prisms are available: standard, high-contrast, and high-resolution.

Specifications

Main body	50i	55i
Magnification	10–1500X	
Optical system	CFI60 Infinity Optical System	
Coarse/fine focusing	Fine: 0.1mm per rotation, Coarse: 13.8mm per rotation, Minimum reading: 1 micron Coarse motion torque adjustable, Refocusing function (with stopper)	
Illumination	6V-30W halogen lamp 100-240V (worldwide voltage)	White LED array AC adapter (100-240V) or optional lithium battery (7.4V)
Built-in filter	ND8	LA60 color balance filter
Eyepiece tube	Binocular tube B (for F.O.V. 22mm) Trinocular tube "F" UW (for F.O.V. 22mm/25mm, observation/photo: 100/0, 0/100) Trinocular tube "T" UW (for F.O.V. 22mm/25mm, observation/photo: 100/0, 20/80, 0/100) Ergonomic binocular tube (for F.O.V. 22mm, inclination: 10-30°, extension: 40mm); DSC port: 100/0, 50/50 (optional)	
Eyepiece lens	10X (F.O.V.: 22mm), 10X M photo mask (F.O.V.: 25mm), 12.5X (F.O.V.: 16mm), 15X (F.O.V.: 14.5mm), UW 10X (F.O.V.: 25mm), UW 10X M photo mask (F.O.V.: 25mm)	
Nosepiece	Sextuple nosepiece Ergo-View cytodiagnostic unit (Motorized changeover 10X to 40X with hand switch, Stamp type marking)	
Stage	Super-hard Alumite coated surface, Stay-in-position stage handle, Stage handle height and tension adjustable Rectangular 159mm X 243mm surface stage, 78mm X 54mm cross travel (x-y movement) 1-slide or 2-slide specimen holder available (option)	Automatic illumination adjustment with Ergo-View
Condenser focusing stroke	27mm	
Intermediate accessories	Epi-fluorescence illuminator (4 filter positions), Magnification module, Eye-level riser, Double port Teaching head	
Observation method	Brightfield, Epi-fluorescence Darkfield, Phase contrast, Simple polarizing	—

Dimensional Diagrams



Unit: mm

Configured with binocular tube B

Configured with ergonomic tube

Microscopy images courtesy of :
 ① Nihon University Itabashi Hospital
 ② Naoyuki Miyokawa, M.D., Ph.D., Associate Professor, Dept. of Surgical Pathology, Asahikawa Medical College Hospital.

Nikon has reduced the amount of chromium, cadmium and lead used in the Eclipse-i Series to an absolute minimum to diminish its environmental impact.

Please contact Nikon for a handy pamphlet listing compatible accessories, including objectives and epi-fluorescence filters.

Specifications and equipment are subject to change without any notice or obligation on the part of the manufacturer. December 2003. ©2003 NIKON CORPORATION



WARNING

TO ENSURE CORRECT USAGE, READ THE CORRESPONDING MANUALS CAREFULLY BEFORE USING YOUR EQUIPMENT.



* Monitor images are simulated.

Company names and product names appearing in this brochure are their registered trademarks or trademarks.

NIKON INSTECH CO., LTD.

Parale Mitsui Bldg., 8, Higashida-cho, Kawasaki-ku,
Kawasaki, Kanagawa 210-0005, Japan
phone: +81-44-223-2167 fax: +81-44-223-2182
www.nikon-instruments.jp/eng/

NIKON INSTRUMENTS (SHANGHAI) CO., LTD.

CHINA phone: +86-21-5058-5055 fax: +86-21-5058-5060

NIKON SINGAPORE PTE LTD

SINGAPORE phone: +65-6559-3618 fax: +65-6559-3668

NIKON MALAYSIA SDN. BHD.

MALAYSIA phone: +60-3-78763887 fax: +60-3-78763387

NIKON INSTRUMENTS EUROPE B.V.

P.O. Box 222, 1170 AE Badhoevedorp, The Netherlands
phone: +31-20-44-96-222 fax: +31-20-44-96-298
<http://www.nikon-instruments.com/>

NIKON FRANCE S.A.

FRANCE phone: +33-1-45-16-45-16 fax: +33-1-45-16-00-33

NIKON GMBH

GERMANY phone: +49-211-9414-0 fax: +49-211-9414-322

NIKON INSTRUMENTS S.p.A.

ITALY phone: +39-55-3009601 fax: +39-55-300993

NIKON AG

SWITZERLAND phone: +41-43-277-2860 fax: +41-43-277-2861

NIKON UK LTD.

UNITED KINGDOM phone: +44-20-8541-4440 fax: +44-20-8541-4584

NIKON INSTRUMENTS INC.

1300 Walt Whitman Road, Melville, N.Y. 11747-3064, U.S.A.
phone: +1-631-547-8500 +1-800-52-NIKON (within the U.S.A. only) fax: +1-631-547-0306
<http://www.nikonusa.com/>

NIKON CANADA INC.

CANADA phone: +1-905-625-9910 fax: +1-905-625-0103



NIKON CORPORATION

Fuji Bldg., 2-3, Marunouchi 3-chome, Chiyoda-ku,
Tokyo 100-8331, Japan
www.nikon.com/

This brochure is printed on recycled paper made from 40% used material.